



**BURLINGTON
STONE**

EST 1843

BURLINGTON COLLECTION

THE ULTIMATE FINISHING STATEMENT

CRAFTSMEN FOR NEARLY 175 YEARS



10

Burlington's highly-skilled stone engineers craft a diverse range of luxurious and signature British natural stone products that exude the ultimate in opulent quality and permanence.



16

With the introduction of the Kirkstone Brathay Blue/Black, Kirkstone Sea Green and Kirkstone Silver Green, the colour range now offers eleven sumptuous stones. Burlington's product offer is unique as it offers only the highest quality British natural stone, engineered and processed by skilled British craftsmen with nearly 175 years of experience to give you the ultimate interior and exterior finishing statement.



Burlington Stone now incorporates the Kirkstone range of stones.



24

COMPANY

- 04 Introduction
- 06 Foreword
- 08 The Process

THE COLLECTIONS

- 10 Bathrooms
- 14 Kitchens & Worktops
- 18 Flooring
- 24 Interior Cladding
- 26 Mosaics, Wet Rooms & Swimming Pools
- 28 Exterior Cladding

PAVING & LANDSCAPING

- 30 Paving
- 36 Walling
- 38 Rockery & Monoliths
- 40 Landscape Aggregates

ROOFING

- 42 Roofing

COLOURS

- 44 Colours & Quarries
- 46 Finishes & Textures
- 48 Bespoke Design

GENERAL INFORMATION

- 52 Specifications
- 54 Acknowledgements
- 54 Environment
- 55 Showrooms



33

THE ULTIMATE BRITISH NATURAL STONE

MILLIONS OF YEARS IN THE MAKING... FROM THE HEART OF THE LAKE DISTRICT

Quarrying a revered and rich natural stone source that was laid down in the English Lake District over 450 million years ago, skilled and talented Burlington Stone craftsmen shape and form an exquisite range of standard product lines and truly bespoke pieces, all of which are limited only by the imagination.

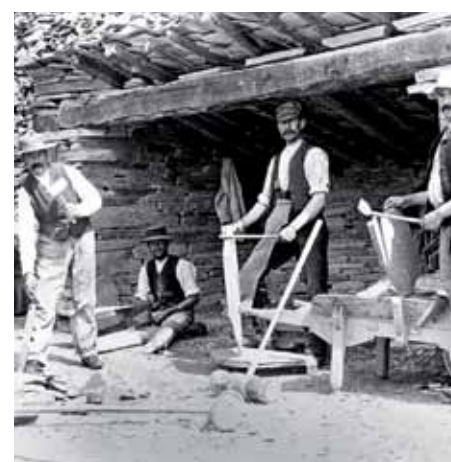
With a choice of eleven sumptuous stones, together with a range of smooth and textured finishes, Burlington's stone products provide the ultimate finishing statement within any home, project, building, landscape or garden.





ESTABLISHED 1843

CRAFTSMEN FOR NEARLY 175 YEARS



Since my great-great-great grandfather, the second Earl of Burlington (later the 7th Duke of Devonshire) laid the foundations in 1843 of what has today become Burlington Stone, his descendants have all been actively involved in promoting the beautiful stone that occurs naturally in the fells near our family home, Holker Hall in Cumbria. It will be my privilege to maintain and build on this journey.

My vision is a blend of the traditions that my family have upheld for more than a century and a half together with a clear plan to create a sustainable business that will serve future generations as well as the wider community. This will come through investment in new technology and skills and will lead to the kind of dynamic business that can react and adapt to ever-changing economic conditions.

Whether residential or commercial; whether traditional or contemporary, the versatility of Burlington's range of natural stone products and the inherited values that pervade Burlington Stone's approach to business make it possible to bring unique style and distinction to any development.

Interior designers, architects, developers and discerning home-owners throughout the world continue to be inspired by the intrinsic aesthetic and technical properties of Burlington's natural stone. Therefore at the heart of all the policies that are developed under my stewardship, will be a single-minded approach to preserving the hard-won standards of exceptional British craftsmanship and commitment to customer service.

Hon Miss Lucy Cavendish

TOP LEFT: William Cavendish (1808-1890) 7th Duke of Devonshire.

TOP RIGHT: Hon Miss Lucy Cavendish.

MIDDLE & BOTTOM: Burlington history images courtesy of the Ruskin Museum, Coniston.



THE PROCESS

The beauty of Burlington's natural stone in its most naked and raw form is to many simply breathtaking. Each piece is, after all, finally laid bare to a world in which it has been hidden for some 450 million years. But if that isn't romantic enough, the process with which the raw material is metamorphosed is something to behold.

The sheer beauty, function and precise form of Burlington's products - from a simple roofing slate to a modern shower tray - emanate from an environmentally sensitive stone extraction process and a seamless fusion of new and time honoured production techniques, all of which work symbiotically together.

Within the exposed environment of the quarry, Burlington extracts material sympathetically using a process known as diamond wire sawing. It is from here that traditional craftsmanship skills - passed down from generation to generation - are seen working alongside state-of-the-art laser cutting and modern production techniques. It is a harmonisation that is as efficient as it is charming, and one that helps characterise the authenticity of what is a signature stone.



KEEPING IT CONTEMPORARY

From flooring, vanity units and splashbacks, to shower trays, aqua panels, wall cladding, bath surrounds and multi-patterned mosaics, Burlington offers a complete stone solution within today's modern, contemporary bathrooms, shower areas (both closed and walk-in) as well as wet and steam rooms.

Using a combination of products, available in an unrivalled range of beautiful natural stone colours and anti-slip finishes, the design potential to create visually stunning minimalist yet functional spaces is infinite. Burlington's stone serves to harmonise with a host of other contemporary finishing materials, fittings and accessories.

MAIN: Baycliff Caulfeild tiles in a honed finish.
TOP: Floor using Baycliff Lord polished limestone with Caulfeild flame finish. Bath panels built using Baycliff Lord honed finish.
MIDDLE LEFT: Kirkstone Silver Green.
MIDDLE RIGHT: Broughton Moor, Bursting Stone, Brandy Crag, Kirkby, Elterwater with mixed mosaic.



TIMELESS CLASSICAL ELEGANCE

Truly at home in the traditional bathroom setting, Burlington's stone creates a statement of enduring quality and represents the pinnacle of timeless luxury. A choice of natural pastel colours that include greens, silver/greys and blacks, together with two complementary limestones, ensures authentic period elegance can be achieved.

With a wide range of charming and quality products to choose from, the homeowner is investing in a classical design statement that will deliver a style of unashamed decadence, luxury and individuality.

British stone that is uniquely distinctive.... and which delivers inspiration.

MAIN: Kirkstone Silver Green.
TOP: Floor using Broughton Moor plus a Baycliff Lord/Caulfeild limestone tile mix in a honed finish.
MIDDLE: In line shower tray in Broughton Moor.
BOTTOM: Broughton Moor tiles to the shower wall (honed finish) and floor (waterjet finish). Mixed Burlington stone mosaic to shower walls.



CONTEMPORARY CHIC

Burlington Stone – the ultimate style statement. The perfect material with which to fashion a clean and incisive look within what for many remains the hub of the home. Helping deliver a decadent alternative to the more traditional look, Burlington’s stone can be used to create a refreshing yet bold statement of design and confidence, without compromising on functionality.

The Burlington worksurface, for example, is the ‘pièce de résistance’. Available with a range of edge profiles, Burlington can supply its stone machined to incorporate drainage grooves and soap recesses, not to mention cut outs for sinks, bowls and other accessories. However it is the stone’s integrity that ensures beauty and hygienic conditions are preserved for life.

MAIN: Worktop, window cills and splashback using Broughton Moor in a honed finish combining with Baycliff Lord floor tiles.
 TOP: Worktop and floor using Brandy Crag and Kirkby in a honed finish.
 MIDDLE LEFT: Brandy Crag worktop. MIDDLE RIGHT: Broughton Moor worktop.



TRADITIONAL

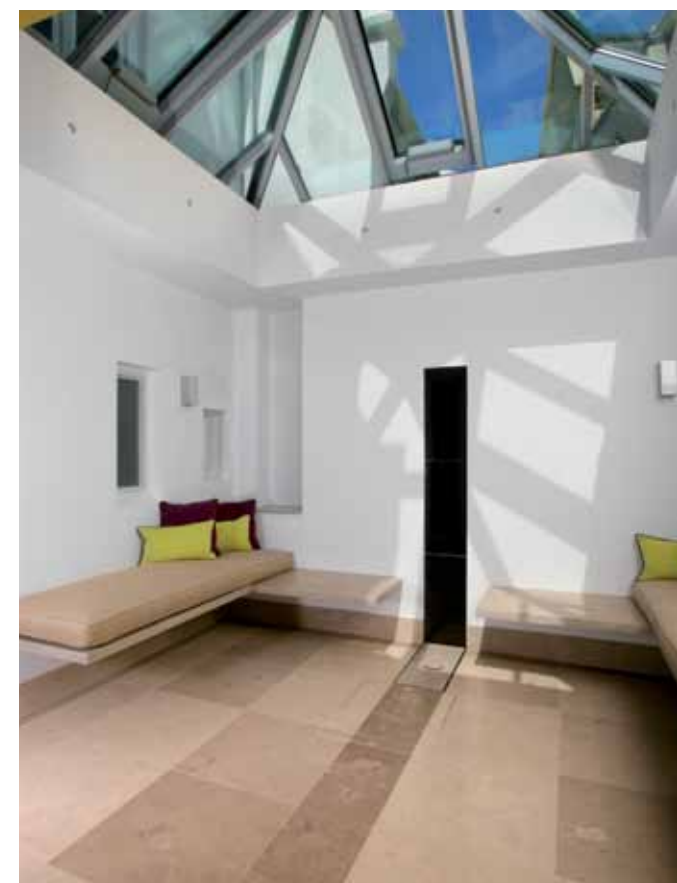
From cottage to farmhouse, Burlington's stone has been helping transform the look of traditional kitchens for generations. Fusing perfectly with looks such as oak, ash, beech, shaker and pine, Burlington's stone is not only unparalleled aesthetically, so too are its technical properties. Not only is this most natural of materials extremely hard wearing, it is easy to clean and maintain.

Not surprisingly, each of Burlington's natural stones and limestones are equally at home whether used for worksurfaces or as flooring. Charming, refined and distinctive, Burlington's stone has an instant character and timeless appeal.

Exclusively different.... where style is cast in stone and opulence personified.



MAIN: Worktop and flooring in Brandy Crag in a honed finish.
TOP: Broughton Moor worktop and splash backs with floor in Baycliff Caulfeild limestone.
BOTTOM: Brandy Crag worktop with sink recess.

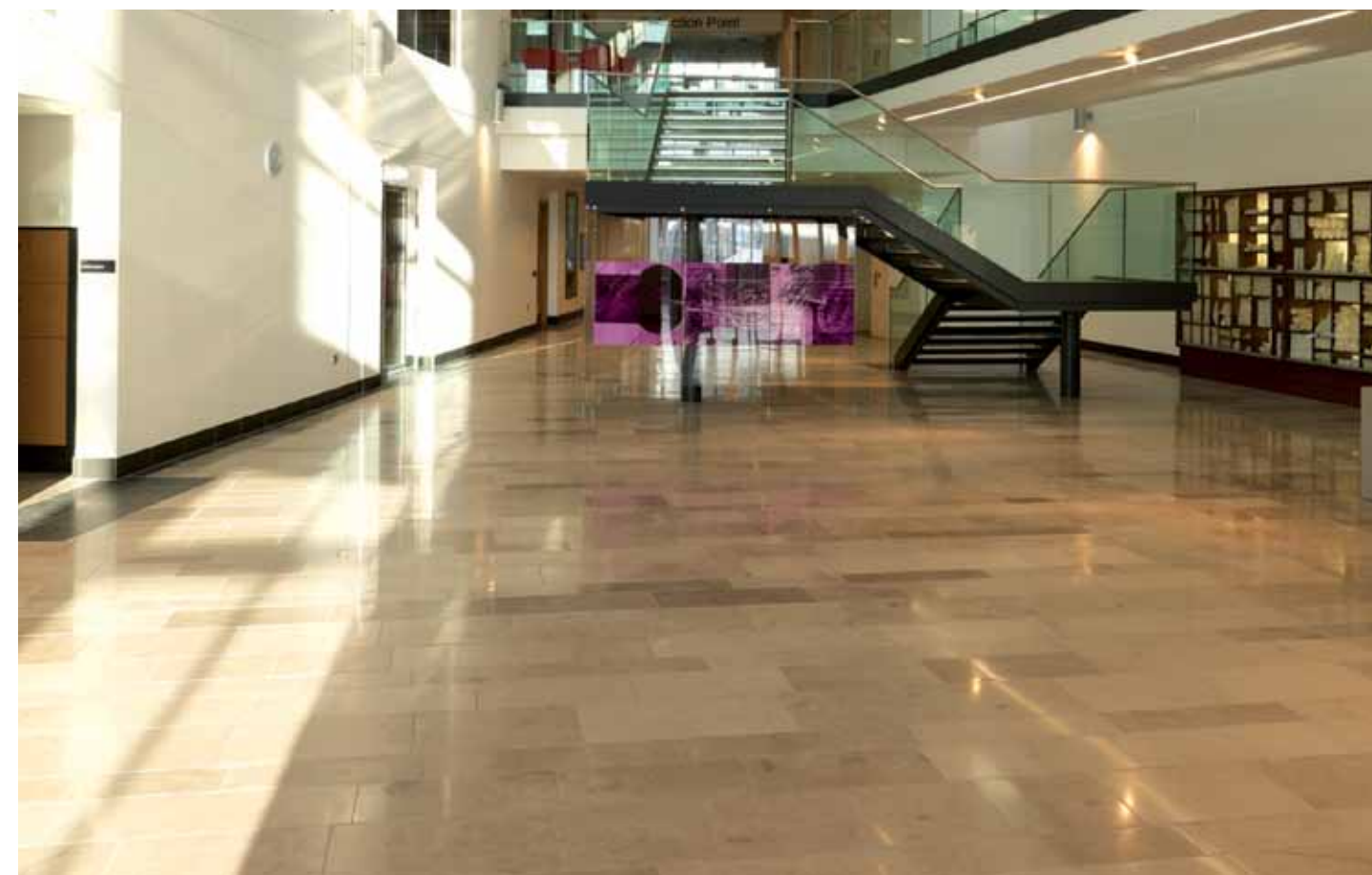


FLOORING

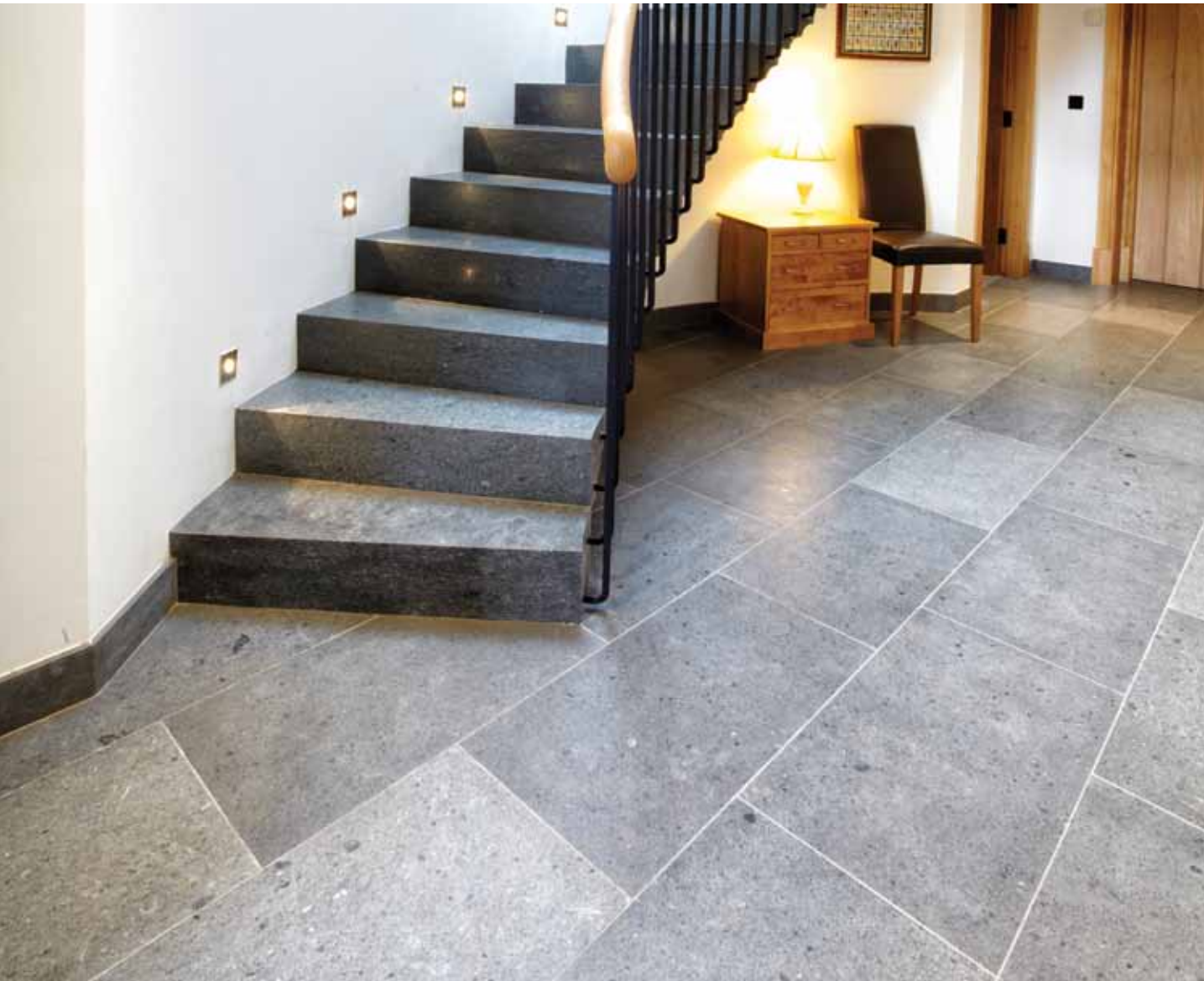
The use of natural stone as a flooring medium is legendary. It has been used for millennia and is one of the most original and natural of building materials that finds itself equally at home in both the exterior and interior environment. Indeed the product's versatility comes in the form of:

- Both standard and bespoke tile range combinations.
- A tantalising colour palette of natural stones, unrivalled the world over.
- A unique range of eleven smooth and textured finishes.
- Superior technical properties.
- Ease of cleaning and maintenance.
- Ease of installation across any floor structure or base.
- Complemented by step treads and risers.

MAIN: Broughton Moor flooring.
TOP LEFT: Floor, bench tops and skirting using Baycliff Lord and Caulfeild limestone.
TOP RIGHT: Brandy Crag Silver floor, shower with mixed random length bands.
BOTTOM: Brandy Crag (back), Baycliff Lord band and Kirkby Blue (front).



MAIN: Kirkstone Silver Green flooring and cladding.
 TOP: Baycliff Lord limestone.
 BOTTOM LEFT: Broughton Moor flooring.
 BOTTOM RIGHT: Brandy Crag floor tiles.



MAIN: Kirkstone Silver Green.
TOP: Brandy Crag flooring and bespoke staircase.
BOTTOM LEFT: Baycliff Lord tiles with mosaic Lord and Caulfeild mix.
BOTTOM RIGHT: Kirkstone Sea Green.



INTERIOR CLADDING

When it comes to interior cladding, nothing equates to the beauty of Burlington natural stone – it is quite simply unsurpassable. What's more, there is a stone for everyone. Native of the English Lake District, each of Burlington's stones is enhanced by subtle and sensitive detailing. Using a combination of tones and textures, design inspiration can take on a whole new form; one where a richness of character can be conveyed across almost any project.

And whilst interior cladding is often regarded as two dimensional, natural stone remains a material with three dimensions, and this most basic of properties can be used to dramatic and unique effect.

MAIN: Broughton Moor honed finish.
TOP: Brandy Crag sawn finish.
BOTTOM: Kirkstone Silver Green.



MOSAICS, WET ROOMS & SWIMMING POOLS

When it comes to wet rooms, swimming pools and the use of natural stone mosaics, Burlington Stone represents the ultimate choice for the discerning. Priding itself on developing sumptuous and leading-edge products manufactured using craftsmanship skills and the finest natural stone source in the world, Burlington is your guarantee when it comes to delivering a look and finish that will be enjoyed for years to come.

Fusing perfectly with today's spectrum of interior design styles, Burlington's unrivalled palette of all British natural stones, finishes and tile format serve to present a myriad of creative opportunities irrespective of space. From compact areas to whole room zones, Burlington's stone represents the perfect solution for creating an oasis of tranquillity.

OPPOSITE TOP: Broughton Moor in a honed finish.
OPPOSITE BOTTOM: Mixed mosaics of Kirkby Blue Grey, Broughton Moor, Bursting Stone and Brandy Crag.
TOP: Baycliff Caulfeild and Lord mixed random length bands.
BOTTOM: Broughton Moor in a flamed finish.





EXTERIOR CLADDING

Each of Burlington's signature structural and aesthetic exterior natural stone cladding products has its own place within the applied environment. Guaranteed to enhance the prestige and significance of any exterior architectural design style – traditional or contemporary - Burlington's stone serves as the perfect backdrop.

In giving architects and designers complete freedom in terms of design flexibility, Burlington exterior cladding can be deployed to deliver both a linear and uniform finish, or random and rough-hewn appearance. It is a material that is perfectly aligned to the exacting requirements of today's modern construction industry, both in terms of its technical performance and look.

OPPOSITE TOP: Broughton Moor exterior cladding in a honed finish.
OPPOSITE BOTTOM LEFT: Light and dark Bursting Stone.
OPPOSITE BOTTOM RIGHT: Broughton Moor exterior cladding.
TOP: Bursting Stone interior and exterior cladding in a flame finish.
BOTTOM: Kirkby in a cleft finish.



PAVING

Guaranteed to deliver a lasting statement of permanence and substance, Burlington's paving is unmatched in terms of its technical performance when compared to many other stones, natural and reconstituted. Extremely hard wearing, practical and durable, Burlington's paving – available with a choice of different finishes – is proven to withstand the rigours of most demanding of external environments.

In addition to our tumbled stone setts (a revolutionary natural paving solution for flexible and rigid installation systems), riven and flamed paving and antique tiles, Burlington has available a range of standard tiles. And don't forget, alongside our standard product offering, Burlington can supply products for the most demanding of bespoke designs.

MAIN: Kirkby riven paving.
 TOP LEFT: Cube house in Baycliff Lord honed finish tiles to internal floor with terrace in Baycliff Lord.
 TOP RIGHT: Westmorland Green riven paving.
 BOTTOM: Westmorland Green flamed paving.



MAIN: Broughton Moor tile planking using light and olive colours.
 TOP: Broughton Moor tiles in a honed finish with mixed mosaic of Kirkby Blue Grey, Broughton Moor, Bursting Stone and Brandy Crag.
 BOTTOM LEFT: Kirkby Blue Grey walling and coping with Baycliff Caulfeild and Broughton Moor paving.
 BOTTOM RIGHT: Broughton Moor tiles in a waterjet finish, with Kirkby Blue Grey tiles in a flamed finish and Baycliff Caulfeild tiles.



From formal to informal, traditional to contemporary, Burlington's landscaping products can be used to create stunning yet functional commercial and domestic schemes.

Indeed such is the diversity of the products on offer – available from our standard product range or engineered to bespoke design requirement – that landscape designers and homeowners can combine uniform shapes and lines with random materials as a means of bringing designs to life. The permanence of the stone provides a perfect contrast to the evolving shape of planting, whilst interacting with other landscaping materials.

Changing landscapes naturally.... whilst watching them evolve in the process.

MAIN: Kirkby antique tiles.
TOP LEFT: Baycliff Caulfeild antique tiles.
TOP RIGHT: Kirkby Blue Grey Tumbled stone setts.
BOTTOM: Outside kitchen using Broughton Moor (honed finish) for worktops.



WALLING

Symbolic of the Lake District and an integral element of its unique landscape, walling stone has been used for centuries to create superstructures of every conceivable shape, size and form.

Alongside traditional random and weathered walling stone - which today is just as popular as a high quality internal decorative finishing material as it is structural - Burlington now offers modular units of split faced walling stone that are simple and easy to install, whilst continuing to deliver that authentic random look.



STEPS



QUIONS

MAIN: Westmorland Green screened weathered walling with complementary quoins and arch.
 TOP: Kirkby Blue screened weathered walling.
 MIDDLE LEFT: Kirkby Blue cropped walling.
 MIDDLE RIGHT: Baycliff limestone cropped walling and honed coping.
 STEPS: Kirkby Blue stile steps in a riven finish with plucked edges; plus Blue riven paving.
 QUIONS: Gate quoins using Westmorland Green stone.



ROCKERY & MONOLITHS

From the smallest of courtyard gardens to expansive landscaping schemes, the ruggedness of Burlington's monoliths and rockery stones can be creatively used to deliver a true signature statement. Whether used as part of a water feature, or within borders, ponds and streams, Burlington stone is at home in any external environment.

Serving to blend and fuse with a plethora of other natural and manmade materials, not to mention all types of vegetation, Burlington stone is effective at creating and enhancing both formal and informal settings, whether located in a rural or urban location.

MAIN: Kirkby Blue stone monoliths.
TOP: Selection of Green and Blue rockery stones.
MIDDLE: Drilled Feature Stone in Kirkby Blue.
BOTTOM: Seat in Kirkby Blue riven stone with plucked edges.

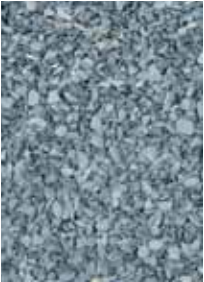


LANDSCAPE AGGREGATES

Decorative and functional, Burlington’s aggregates are an ideal medium for any kind of hard landscaping design. Available in a multitude of sizes, from dusts and fines, to mulches and paddlestones, they have traditionally been used for a variety of applications including the creation of garden paths, driveways, ponds and water features.

Burlington’s mulch products, in particular, are widely sought after as an inexpensive, low-maintenance gardening solution. As well as providing an attractive contrast when used in conjunction with paving/feature stones, Burlington’s slate mulch actually benefits the soil’s growing conditions, without degrading or breaking down.

DECORATIVE AGGREGATES



Kirkby Blue Grey



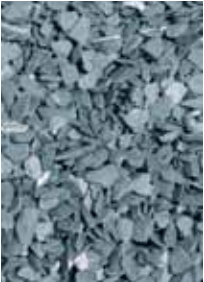
Westmorland Green

MINI MULCH 5-14mm

COLOURS: Kirkby Blue Grey and Westmorland Green.

UNIT OF SALE: Per tonne loose, 25kg bag and bulk bag.

APPLICATIONS: Paths and driveways.



Kirkby Blue Grey



Westmorland Green

MULCH 20mm

COLOURS: Kirkby Blue Grey and Westmorland Green.

UNIT OF SALE: Per tonne loose, 25kg bag and bulk bag.

APPLICATIONS: Paths, driveways and weed suppression.



Kirkby Blue Grey



Westmorland Green

MULCH 40mm

COLOURS: Kirkby Blue Grey and Westmorland Green.

UNIT OF SALE: Per tonne loose, 25kg bag and bulk bag.

APPLICATIONS: Weed suppression paths, screescapes and features.



Kirkby Blue Grey



Westmorland Green

OVERSIZED MULCH

COLOURS: Kirkby Blue Grey and Westmorland Green.

UNIT OF SALE: Per tonne loose, 25kg bag and bulk bag.

APPLICATIONS: Weed suppression, screescapes and features.

CONSTRUCTION AGGREGATES



FINES

COLOURS: Kirkby Blue Grey and Westmorland Green.

UNIT OF SALE: Tonnes, loose or bulk bags.

APPLICATIONS: Footpaths, blinding, paving subbase and filler.



MOT TYPE 1

COLOURS: Kirkby Blue Grey and Westmorland Green.

UNIT OF SALE: Tonnes, loose or bulk bags.

APPLICATIONS: General hard standing, roads, tracks and subbase.



INFILL

COLOURS: Kirkby Blue Grey and Westmorland Green.

UNIT OF SALE: Tonnes, loose or bulk bags.

APPLICATIONS: General hard standing and larger projects.



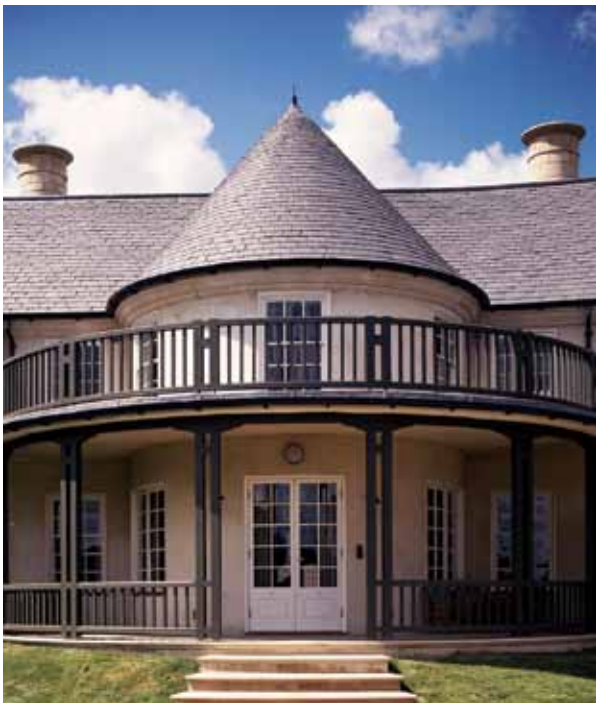
CLEAN STONE - PIPE BEDDING

COLOURS: Kirkby Blue Grey and Westmorland Green.

UNIT OF SALE: Tonnes, loose or bulk bags.

APPLICATIONS: Variety of draining stones for domestic and commercial projects.

MAIN: Kirkby Blue Grey mulch. Kirkby Blue Grey roof.



ROOFING

Natural slate..... a hundred times older than mankind and a material that has been quarried for over 400 years to create stunning and weathertight roof coverings.

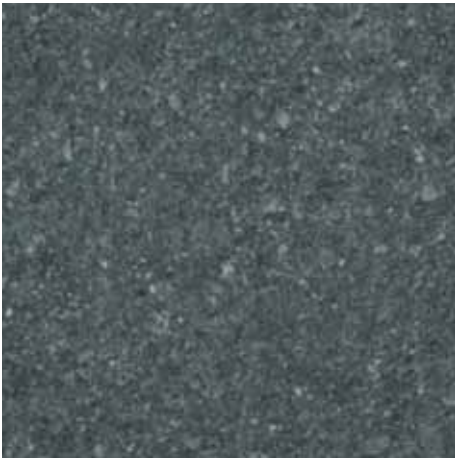
Unsurpassed in its ability to stand the test of time, whilst providing an exquisite finish to any home, new or refurbished, Burlington's Blue/Grey and Westmorland Green natural slate roofing is quintessentially British and speaks permanence, consideration and quality. The perfect medium for creating fascinating and striking roofscapes of distinction, it conveys the line and mass of a roof in a manner unmatched by other materials.

OPPOSITE TOP: Burlington Blue Grey best grade random slates.
OPPOSITE BOTTOM: Burlington's Blue/Grey best sized slates.
TOP: Burlington's Westmorland Green slates.
RIGHT: Burlington's Blue/Grey strong grade random slates.

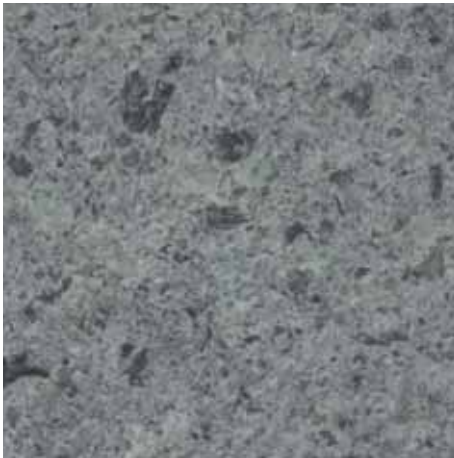
COLOURS & QUARRIES



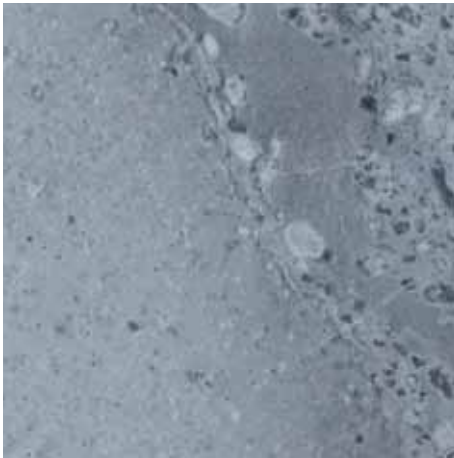
KIRKBY STONE



BURSTING STONE



BRANDY CRAG



BRANDY CRAG SILVER



BROUGHTON MOOR



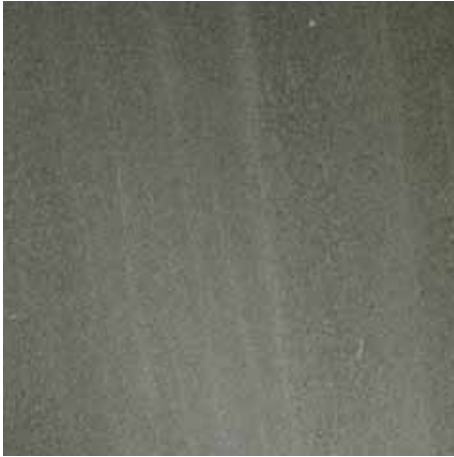
ELTERWATER



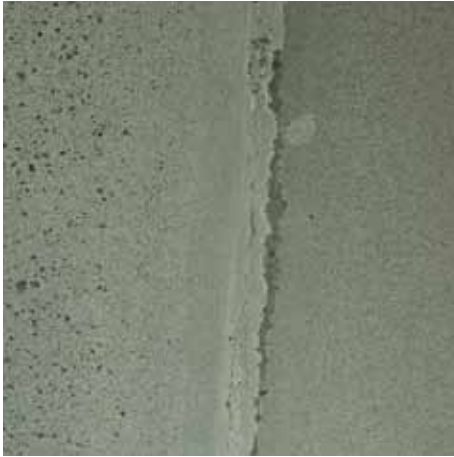
BAYCLIFF CAULFEILD



BAYCLIFF LORD



KIRKSTONE SEA GREEN



KIRKSTONE SILVER GREEN



KIRKSTONE BRATHAY BLUE/BLACK

KIRKBY STONE

The Kirkby quarry is located on Kirkby Moor, just above the village of Kirkby-in-Furness and has been operated for well over 400 years. Kirkby Stone is an even blue grey colour throughout. Kirkby Stone has been used for generations to provide walling, flooring, roof coverings, cills and copings. Architects and designers around the world have long taken advantage of its natural beauty, durability and adaptability to create classic weather resistant details and surface finishes. Kirkby Stone is sedimentary in nature and was formed in the Silurian period, some 300-350 million years ago.

BURSTING STONE

The Bursting Stone quarry is one of the most prominent quarries within the Lake District, situated on the side of 'Coniston Old Man' and has been worked since the middle of the 19th Century. Bursting Stone is olive green in colour and often highlighted by contrasting veins which emphasise its natural origins. Bursting Stone has been used to provide cladding, flooring, cills and copings. Its rich, dark contrasting olive green tones create subtle colour changes to add life and character to any domestic or commercial project.

BRANDY CRAG

The Brandy Crag quarry is situated just above Coniston Village, within the Coniston Coppermines Valley and has been worked since the middle of the 19th Century. Brandy Crag is a grey stone, often highlighted by contrasting veins which emphasise its natural origins. Architects and designers around the world have long taken advantage of its natural beauty, durability and adaptability to create classic weather resistant details and surface finishes. The richness of Brandy Crag makes it ideal for use in interior furniture and fittings, whether in traditional or modern design schemes.

BRANDY CRAG SILVER

Not surprisingly, Brandy Crag Silver emanates from Burlington's Brandy Crag quarry in the Coppermines Valley located close to the famous village of Coniston. As its name suggests, it is a silver grey natural stone that exhibits softer, lighter tones and shades than Burlington's familiar and popular grey Brandy Crag stone. As with each Burlington Stone, its appeal and character is elevated by the existence of contrasting veins and markings inherent within the body of the stone that

not only serve to highlight its authenticity but also its outstanding tactility. Brandy Crag Silver serves to offer architects, interior designers, specifiers and discerning homeowners with another quintessentially British natural stone that complements both traditional and contemporary design styles.

BROUGHTON MOOR

As its name suggests the quarry is situated on Broughton Moor, mid-way between Broughton-in-Furness and Coniston and has been worked since the middle of the 19th Century. Broughton Moor is a mid green stone, often highlighted by contrasting white veins and beautiful tone changes that reflect its natural origins. Broughton Moor can be extracted in a variety of green tones to add a dark and light green contrast to surfaces yet purvey the beauty of its natural markings. Broughton Moor has been used for generations to provide walling, flooring, cladding, cills, worktops, and stairs. The richness of Broughton Moor makes it ideal for use in interior furniture and fittings, whether in traditional or modern design schemes.

ELTERWATER

The Elterwater quarry is situated at the foot of the beautiful Langdale Valley with open views to the Langdale Pikes and has been worked since the middle of the 19th Century. Elterwater is a pale green stone, often highlighted by contrasting markings which emphasise its natural origins. Elterwater has been used to add character and beauty to many domestic and commercial projects around the world for paving, flooring, roofing, cladding, walls, cills and worktops. Like Broughton Moor, Bursting Stone, and Brandy Crag, Elterwater is a metamorphic volcanic stone from the Ordovician period, and is thus 450-500 million years old.

BAYCLIFF CAULFEILD

The Baycliff quarry is situated on the outskirts of the historic market town of Ulverston and was formed in the Carboniferous period over 250 million years ago. Baycliff is one of the hardest and most durable limestones available for use in construction. Baycliff Caulfeild is a buff coloured limestone with light coffee mottling which is available in honed and flame finishes. Baycliff limestone is a versatile material, used by architects and designers to create distinctive, durable floors and interior fittings of great character.

BAYCLIFF LORD

Baycliff Lord is an oatmeal coloured limestone with dark cream markings, well suited for specification in attractive paving and flooring schemes, and for use in landscaping designs.

KIRKSTONE SEA GREEN

The Kirkstone Petts quarry lies 300m west of Kirkstone Pass and the Kirkstone Sea Green has a wonderful aesthetic beauty for any commercial and residential project. Kirkstone Sea Green is a durable green stone created from metamorphic volcanic activity some 450 million years ago.

KIRKSTONE SILVER GREEN

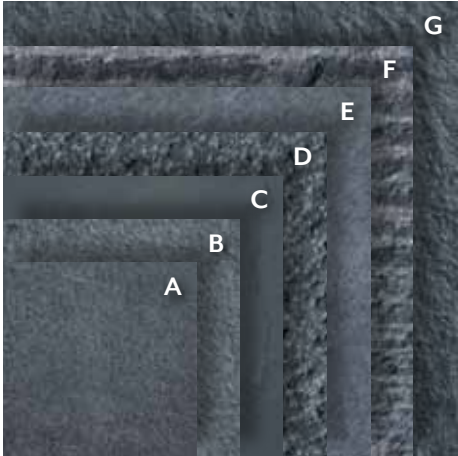
The Kirkstone Silver Green is also quarried from the Kirkstone Petts quarry. The Silver green stone is extracted and manufactured 500m above sea level, high in the hills of the English Lake District, to create a silver green stone with strong natural markings and a broad range of shading which helps to exhibit the unique volcanic origins of this robust and attractive stone formed over 450 million years ago.

KIRKSTONE BRATHAY

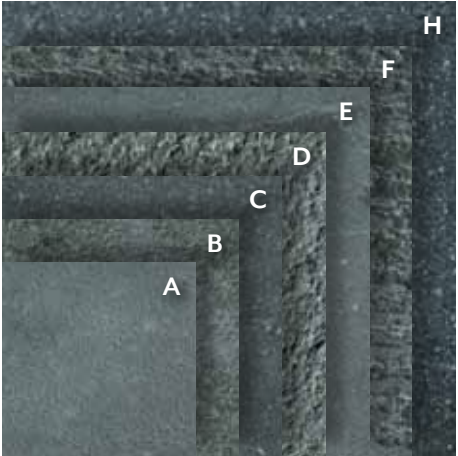
The Kirkstone Brathay Blue/Black has been quarried since the reign of Queen Elizabeth I at the Brathay quarry, which is situated 2 ½ km south-east of Skelwith Bridge, between Ambleside and Hawkshead. It is a hard sedimentary stone, formed under intense pressure and is characterized by a fine golden thread and dense blue / black body of colour.

The colours shown are indicative only. Tile, cladding, worktops or any specific product choices should be made after reference to specific samples. The uniqueness of Burlington natural stone means colour tone and markings can change as a consequence of its extraction from different stone seams and the finish carried out to its surface.

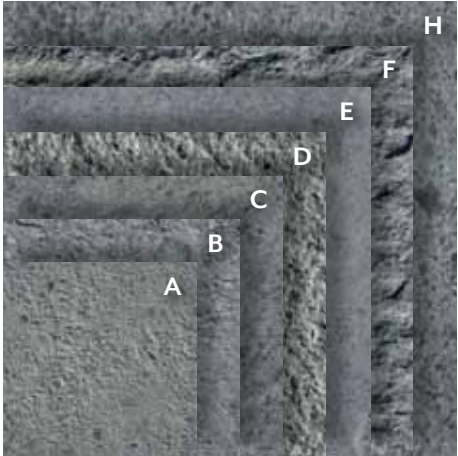
FINISHES
& TEXTURES



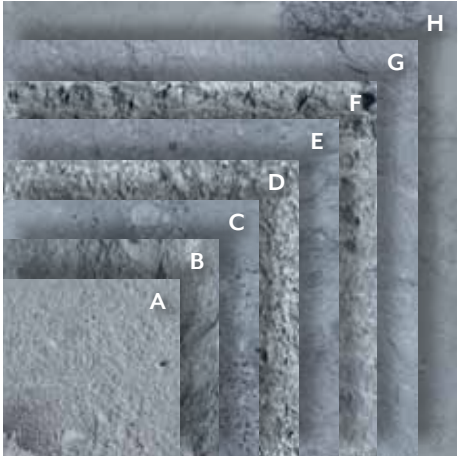
KIRKBY STONE



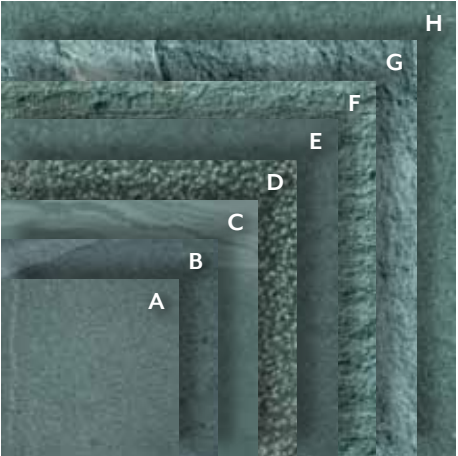
BURSTING STONE



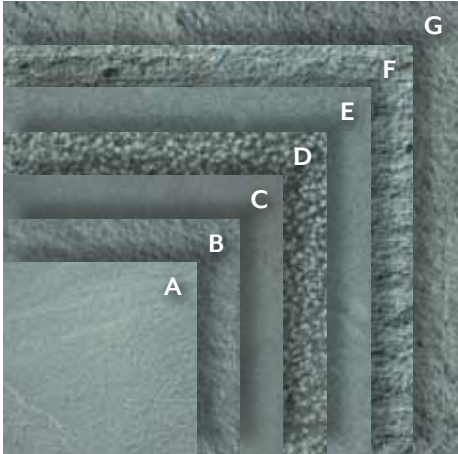
BRANDY CRAG



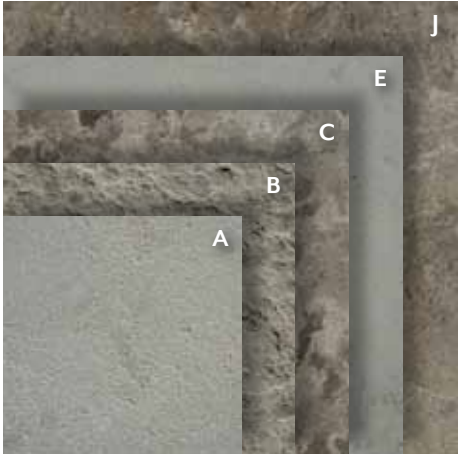
BRANDY CRAG SILVER



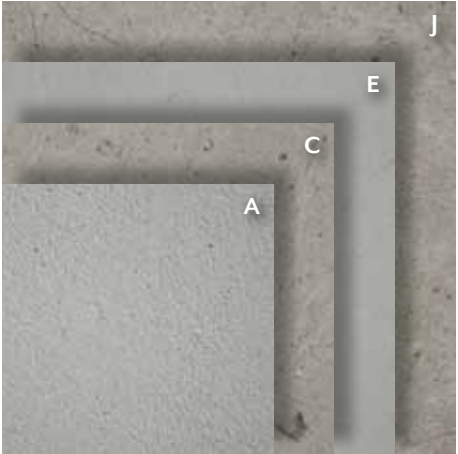
BROUGHTON MOOR



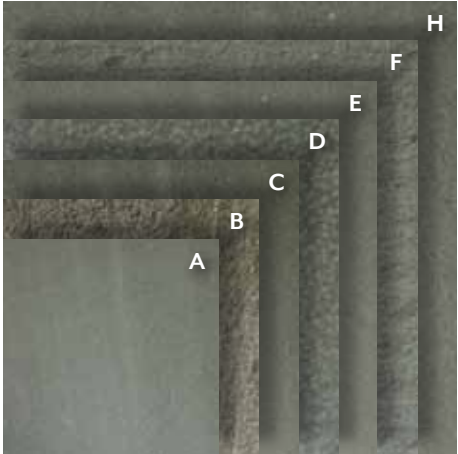
ELTERWATER



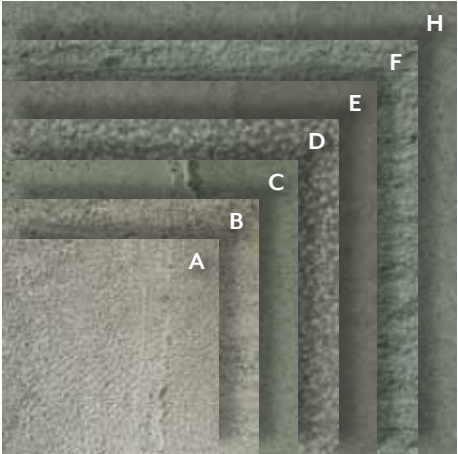
BAYCLIFF CAULFEILD



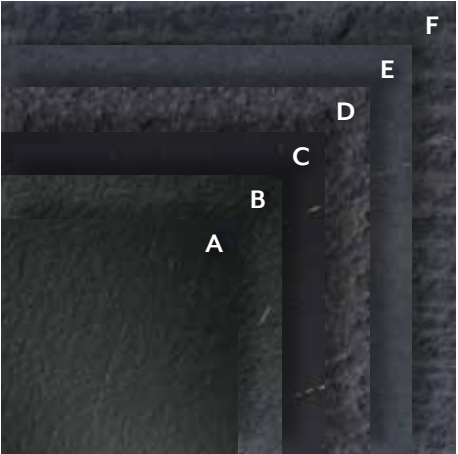
BAYCLIFF LORD



KIRKSTONE SEA GREEN



KIRKSTONE SILVER GREEN



KIRKSTONE BRATHAY BLUE/BLACK

Adding to what is an almost limitless product offering, is an equally inspiring palette of rich and welcoming stone colours, each of which is native to the English Lake District. Authentically named after the quarries from which the stone is extracted comes a unique mix of eleven British natural stones. Adding to the romance of each stone's rich colouring are contrasting yet complementary veins and markings that emphasise its natural origin.

Echoing the depth and diversity of Burlington's natural stone colour palette and product offering is the range of smooth and textured finishes that can be specified. Indeed it is the combination of such USPs that makes Burlington a unique proposition on the global stage. With each finish having its own place subject to its applied environment, specifiers and homeowners can choose from:

- A GRITBLASTED:** A high-pressure airline projects coarse-grained abrasives, giving a regular non slip finish.
- B FLAME TEXTURED:** Heat and water combine to achieve a regular textured finish.
- C HONED:** A smooth finish with a slight sheen, produced by using a polishing head.
- D SPOT TEXTURED:** The top surfaces of sawn slabs are pneumatically tooled to produce a pitted surface.
- E SANDED:** The top surfaces of sawn slabs are coarsely diamond sanded to produce a non slip finish.
- F LINE TEXTURED:** The top surfaces of sawn slabs are pneumatically tooled to produce a grooved surface.
- G RIVEN CLEFT:** A finish in which the stone is split along its natural cleavage plane.
- H WATERJET:** A similar finish to honed but with greater slip-resistance.
- J POLISHED:** A smooth high gloss finish, produced by using a polishing head. For limestone only.



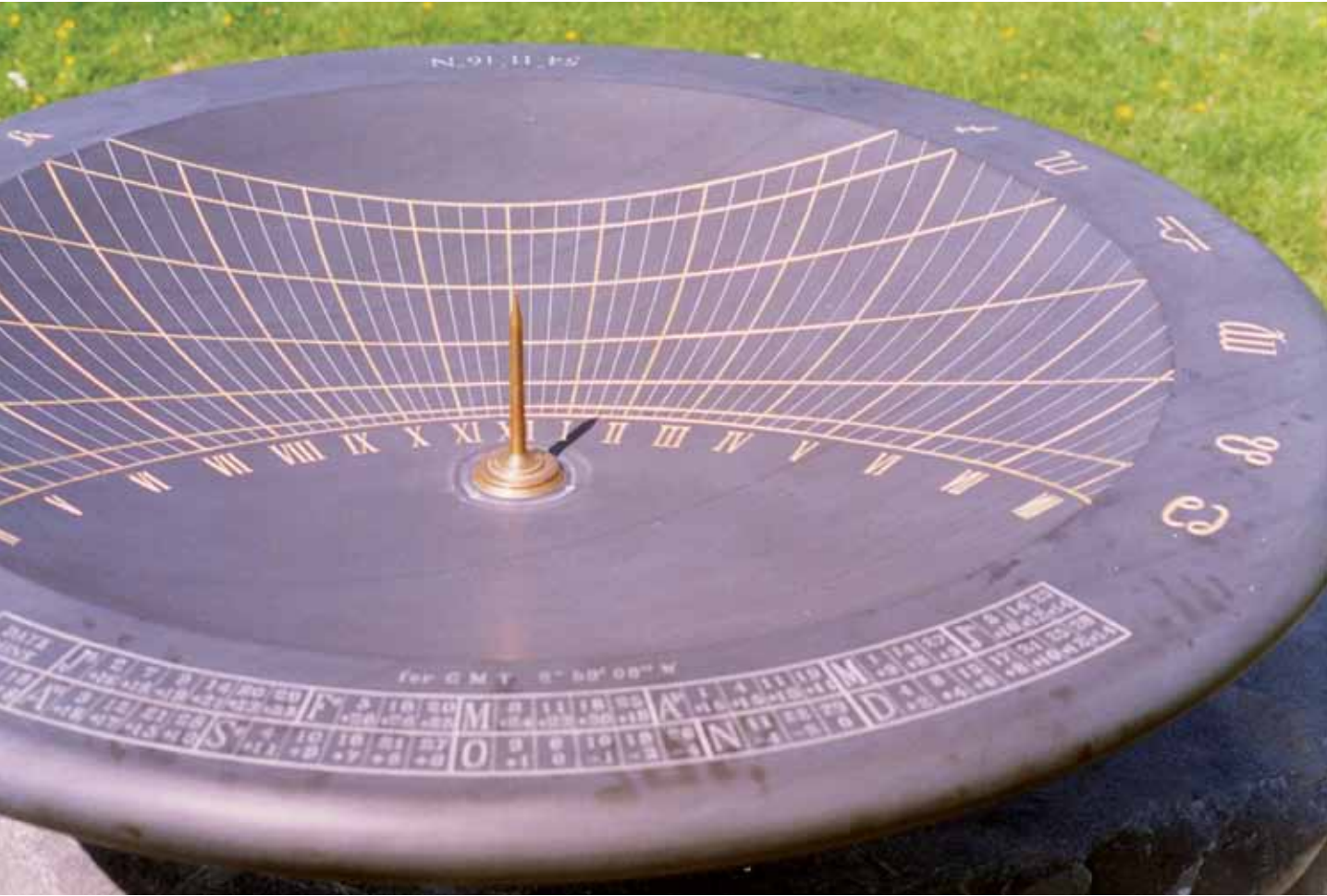
BESPOKE DESIGN

From the most simplistic of sketches through to highly detailed drawings, Burlington has the skills, expertise, technology and resources required to execute the creation of signature stone pieces.

Whether singular items or multiple components of bespoke design concepts, originators can rest assured that Burlington will guarantee to deliver the perfect tailored solution.

With access to an experienced in-house technical team, support is provided throughout every step of the bespoke design service process. Whether in relation to production advice, or design and installation assistance, such support is your reassurance that Burlington will never compromise on delivering the perfect end result with precision and timing.

MAIN: Brandy Crag staircase.
TOP: IFC, Washington. Bursting Stone, Elterwater and Brandy Crag used to create contrasts.
MIDDLE LEFT: Jersey Needle, Channel Islands.
MIDDLE RIGHT: Jersey Needle detail, Channel Islands.
BOTTOM LEFT: Office desk using Kirkby Blue stone.



OPPOSITE TOP: Burlington head office using combinations of Bursting Stone, Broughton Moor, Elterwater and Kirkby stones in a flame finish.
OPPOSITE BOTTOM LEFT: Kirkby Blue Grey fireplace.
OPPOSITE BOTTOM RIGHT: Kirkby Blue Grey screened weathered walling.
TOP: Holker Sundial, Kirkby Blue Grey.
MIDDLE LEFT: Public Records Office, London using Bursting Stone, Broughton Moor and Elterwater.
MIDDLE RIGHT: Glasgow Airport using Broughton Moor stone with gritblasted slip resistance strip to step treads.



- 1 Cladding using Brandy Crag.
- 2 Sink in Broughton Moor.
- 3 Baycliff Caulfeild and Lord mix.
- 4 Sink and cladding in Broughton Moor.
- 5 Vanity unit in Baycliff Lord.
- 6 Mix quarry mosaic.

PROJECT PACKS

Project packs are made using a combination of 600x300 sizes to create a random sized pattern (see Burlington technical department for actual split of sizes and pattern).

ROOFING PRODUCTS

Burlington produce a comprehensive range of Blue and Green roofing slates to create uniform sized slate roofs or random sized, diminishing course slate roofs. Please call Burlington customer service on +44 (0)1229 889 661 for further information.

DECORATIVE AGGREGATES

Burlington produce a range of decorative aggregates that include 40mm and 15-30mm Green and Blue slate mulch, paddle stones, rockery stone, and a range of holed and unholed slate monoliths. Please call Burlington customer service on +44 (0)1229 889 661 for further information.

WALLING PRODUCTS

A range of random sized weathered walling products as referred to on pages 36 and 37 are available. In addition walling is available in a sawn finish, and split finish. Please call Burlington customer service on +44 (0)1229 889 661 for further information and prices.

OTHER NOTES

For all technical information, pack quantities and weights please contact the Burlington Technical department on +44 (0)1229 888 009.

MATRIX OF STANDARD PRODUCTS

		BROUGHTON MOOR	ELTERWATER	KIRKBY STONE	BRANDY CRAG	BRANDY CRAG SILVER	BURSTING STONE	BAYCLIFF LORD	BAYCLIFF CAULFEILD	WESTMORLAND GREEN	KIRKSTONE BRATHAY BLUE/BLACK	KIRKSTONE SILVER GREEN
HONED TILES	300mm x 300mm x 12mm (Honed)	●	●	●	●	●	●				●	●
	600mm x 150mm x 12mm (Honed)	●	●	●	●	●	●				●	●
	600mm x 300mm x 12mm (Honed)	●	●	●	●	●	●				●	●
	600mm x 600mm x 12mm (Honed)	●	●	●	●	●	●				●	●
	1000mm (random) x 200mm x 12mm (Honed)	●	●	●	●	●	●				●	●
	1000mm (random) x 300mm x 12mm (Honed)	●	●	●	●	●	●				●	●
	1000mm (random) x 400mm x 12mm (Honed)	●	●	●	●	●	●				●	●
	300mm x 300mm x 15mm (Honed)							●	●			
	600mm x 300mm x 15mm (Honed)							●	●			
	600mm x 600mm x 15mm (Honed)							●	●			
MOSAICS	Honed Square mosaics (300mm x 300mm)	●		●	●			●				
	Combination Honed square mosaic (300mm x 300mm)	●		●	●		●					
	Antiqued Square Mosaic (300mm x 300mm)							●				
	Honed Strip mosaic (400mm x 200mm)	●		●	●			●				
	Combination Honed strip mosaic (400mm x 200mm)	●		●	●		●					
	Antiqued Strip Mosaic (400mm x 200mm)							●				
TUMBLLED STONE SETTS	Tumbled stone sett - 222mm x 148mm x 50mm		●	●		●						
	Tumbled stone sett - 148mm x 148mm x 50mm		●	●		●						
	Tumbled stone sett - 148mm x 111mm x 50mm		●	●		●						
	Tumbled stone sett - 200mm x 100mm x 100mm		●	●		●						
PAVING & PATIOS	Antique tile - 200mm x random lengths			● 25-35mm thick					● 20mm thick			
	Antique tile - 250mm x random lengths			● 25-35mm thick					● 20mm thick			
	Antique tile - 300mm x random lengths			● 25-35mm thick					● 20mm thick			
	Riven tile - 200mm x random lengths			● 25-35mm thick						● 40mm thick		
	Riven tile - 250mm x random lengths			● 25-35mm thick						● 40mm thick		
	Riven tile - 300mm x random lengths			● 25-35mm thick						● 40mm thick		
	Flamed tile - 200mm x random lengths x 29-33mm									●		
	Flamed tile - 250mm x random lengths x 29-33mm									●		
	Flamed tile - 300mm x random lengths x 29-33mm									●		
WALLING	Cropped Walling (Length: 100-500mm, Width: 50-250mm, Nominal 150mm bed)			● Width 20-250mm				● Combination of Lord & Caulfeild	● Combination of Lord & Caulfeild	● Width 75-250mm		
	Weathered Walling (Length: 100-800mm, Width: 50-600mm, Height: 25-500mm)			●						●		

Please check with Customer Services for availability of any other sizes and finishes, which may become available periodically.
● = Available within 7 working days.



ACKNOWLEDGEMENTS

Pages 3 & 24:
Martin Pease, Grand Designs.

Page 7:
Historic images: Ruskin Museum, Coniston.

Page 19 (top left):
Clive Chapman Architects. Stonemason - Michael Jensen MA (RCA).

Pages 19 (top right), 23 (bottom left), 27 (top), 36, 37, 50, 51, 52:
Paul Dixon Ltd, Project management, building & masonry contractor.
www.pauldixonltd.co.uk e: paul@pauldixonltd.co.uk

Pages 26 (top):
Four Seasons Hotels & Resorts.
Photographer: Don Riddle. www.donriddle.com

Pages 28 (bottom left):
Taylor Young. www.tayloryoung.co.uk

Page 31 (top left):
Paul Archer Design. Stone Mason - Michael Jensen MA (RCA).

Pages 37 (middle left):
Frederic Robinson Limited.

BROCHURE DESIGN:
Mark Rogers - www.RevolverDesignStudios.com

PHOTOGRAPHY:
Russ Mills Photography (various) www.russellmillsphotography.co.uk
Redshift Photography (page 25, top)
Simon Herrema Photography (various)

BUILDING & LANDSCAPING WORK:
Mike Thwaites - Mike Thwaites Ltd.

LANDSCAPING:
David Aitken - Wildly Rural.

LANDSCAPE DESIGN:
Nicola Hills - Damson Design Ltd.

ENVIRONMENT

Burlington seeks to encourage and implement a range of practices that actively minimise the impact on the surrounding environment from its slate quarrying operations, and endeavours to extend its waste management techniques to maintain a sustainable industry for the future.

- Burlington takes its responsibilities to the environment very seriously.
- Burlington constantly works closely with local planning authorities and environmental groups.
- Since 2000, Burlington has been a member of the Corporate Forum for the Council for National Parks.
- Burlington extracts material sympathetically using 'diamond wire sawing' technology originally pioneered in the marble industry of Italy.
- All water used on the main site is recycled with the addition of a flocculent to separate the solid content before the clean water is returned to the machine.
- Burlington operates a 'secondary products' department, established to make as much use as possible of the waste slate from all quarries.
- Burlington operates a number of dynamic and progressive quarry restoration projects.
- Burlington Stone is ISO 14001 accredited and aims to utilise 100% of the rock extracted.



SHOWROOMS

Burlington's flagship Stone Studio is set against a stunning, panoramic Lakeland Fells backdrop. It is the perfect location from which to draw inspiration and develop design ideas that simply burst in abundance from a plethora of creative yet functional interior and exterior stone solutions.

Covering both traditional and contemporary settings, the Stone Studio sets the benchmark when it comes to demonstrating the versatility and suitability of natural stone within and around the home. Visitors can meander through living room and kitchen settings, imagine savouring the delights of opulent and splendid havens of tranquillity that are wet room and bathrooms, whilst also experiencing the sensation that Burlington's stone can bring to al fresco dining areas and the garden.



Where you see this logo, scan the picture with your Smartphone / Tablet to bring the image to life. Please note that you need the Aurasma App.





BURLINGTON STONE

EST 1843



VISIT OUR SHOWROOMS

SOUTH LAKES

Burlington Slate Limited

Cavendish House Kirkby-in-Furness
Cumbria LA17 7UN

LONDON

Burlington Slate Limited

The SCIN Gallery Morelands
25-27 Old Street London EC1V 9HL

T +44 (0)1229 889 661 F +44 (0)1229 889 466

e: sales@burlingtonstone.co.uk

USA

Burlington Natstone Inc

2701 West 15th Street Suite 505 Plano TX 75075 USA
T (972) 985 9182 F (972) 612 0847

www.burlingtonstone.co.uk



A member of
Holker Group

